

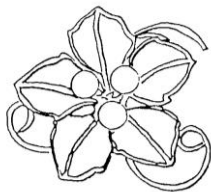
# School and Curriculum Overview

---

## Getting Started with Jewellery Design

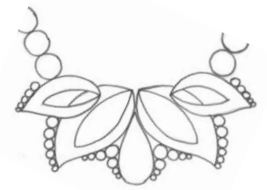
Designing Jewellery requires a serious approach to understanding different forms and shapes and the logistics of drawing creative pieces effectively in various views. Both freehand sketching and precise drafting techniques are covered in this program which will be beneficial to working with a customer/client as well as the manufacturer who will make the piece to your specifications. You will learn what exactly is required to equip you with the means to succeed and how to use the tools of the trade to produce any type of jewellery design whether you have prior jewellery experience or not.

### Topics covered in this course will include:

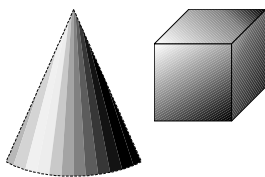


Quick and efficient Tracing and Sketching techniques to enhance productivity and boost creativity.

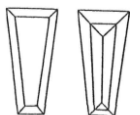
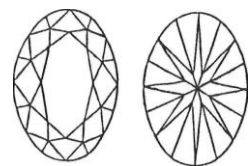
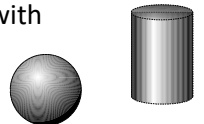
Sketching techniques with fast enlargement or reduction of design to carry out entire jewellery lines with matching themes



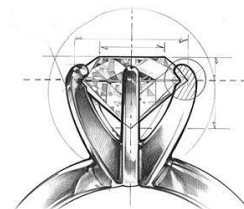
Understanding basic forms and how these apply to jewellery. Learning how to communicate with the manufacturer in drawing accurate and precise top, side and end view designs. Drafting techniques as applied to jewellery.



Adding various types of Gemstones to your designs. Understanding the industry standards for gems, sizes, shapes, cutting styles and other options



The importance of Settings and how they can change the look of a design dependant on which choice of setting.



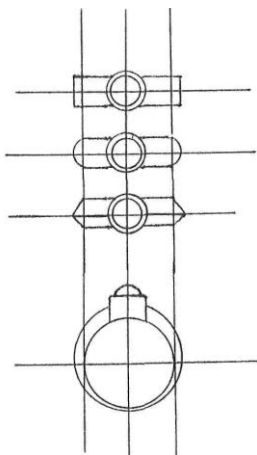
Findings, essential component parts, the "bits and pieces" (usually pre-fabricated) which hold the jewellery to the wearer or the gems to the jewellery.



Understanding jewellery manufacturing techniques so as to advise the customer on appropriate design possibilities which can be produced within the customer time frame.

Gathering of customer details to ensure the communication between the jewellery designer and client is in order and clear.

Creating all types of jewellery styles, Pendants, Earrings, Bracelets, Brooches and Pins both for Men, Women or Children.



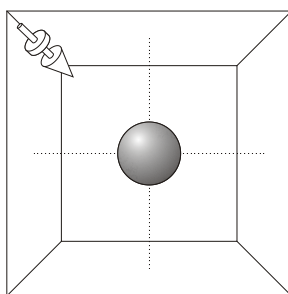
In the second program, JD200, we learn the specifics on drawing Rings in top, side and end views for the needed communication with the manufacturer. Adding gems to the curved ring form.

Understanding measurement and use of guides and charts to determine proper ring sizes, stone weights and other important measures for designing jewellery. Assessing estimated gemstone and metal weights for customer approval

How to deal with more complex designs, considerations & foreshortening, Drawing rings in perspective views, one and two-point Perspective. Fast sketches for communicating ideas to the customer.



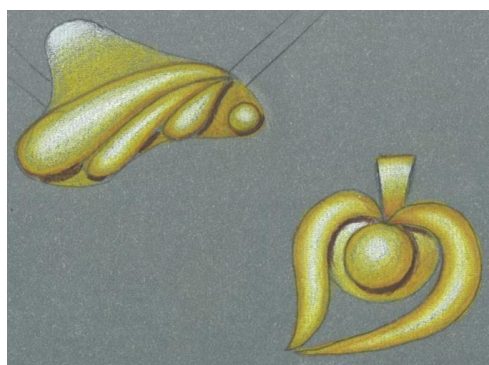
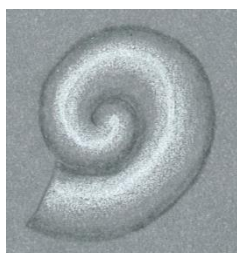
Costing of jewellery pieces, including information on metals and gems.



In the third, JD 300, we take a look at understanding Light source and how to produce the most flattering look for jewellery designs. Achieving a 3-D effect with shading on any piece of jewellery



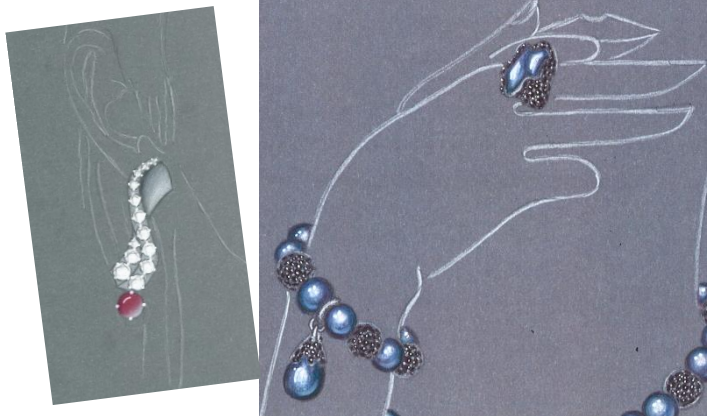
Colour theory and how it applies to the Jewellery you design,





Rendering techniques and how to efficiently produce a design which come to life on the paper. Rendering both metals and gems.

The last program, JD400, focuses on Layout and Presentation of jewellery designs for different purposes, including for exhibition, portfolio use or to elicit customer approval before manufacture.



Review of Historical styles in view to understanding trends and fashion in order to recommend stylish and trendy alternatives to suit the taste of any customer.

Understanding trends and fashion, knowing where to get the latest information and what to propose which will best suit the customer needs, occasion, bodytype and colour preferences.



Emphasis will be placed on proper construction of jewellery pieces, manufacturable and creative designs. Many manufacturing techniques will be discussed and shown.



If being a jewellery designer is your aspiration then this entire program will lead you quickly and directly along the right path. Completing all the assessments by the end of the program will provide you with a worth while portfolio to show to employers, clients or as a good gauge to what you have learnt and achieved with your time.