

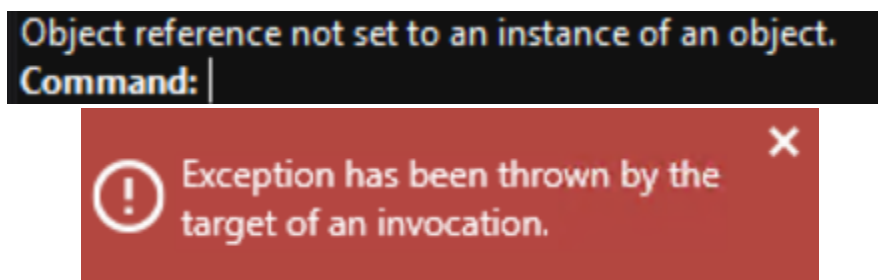
OH ****! NOTHING IS WORKING ANYMORE!!!

What should I do?!?

This happens **OFTEN** to new users.... Especially when you use tools out of sequence or make adjustments that the matrix programmers never anticipated a user would make.

It is not always your fault though - it also happens because there is Matrix is a complex tool and the Matrix team perform limited testing between releases - unanticipated bugs are commonplace.

If you see these messages (or other strange looking messages about exceptions):



It means **MATRIX** has lost its connection to Rhino – and **NOTHING** within matrix will work until that connection is re-established.

SOLUTION

Matrix Menu -> File -> New

What the **?!?!? But I have been working for HOURS! How can I save my work!??**

Matrix cannot save your work.... It cant do anything.

But... RHINO can!

Fortunately, you can access Rhino directly to save your file:

Matrix Menu -> File -> Save As

Save your file TEMPORARILY in

Z:/JDMIS Student Files/[Your Folder name]/MatrixTemporarySave.3dm

Then reconnect Matrix and Rhino

Matrix Menu -> File -> New

Finally, **IMPORT** your saved model parts into the new workspace.

Matrix Menu -> File -> Import

Select your temporary file **Z:/JDMIS Student Files/[Your Folder name]/MatrixTemporarySave.3dm**

