



Jewellery Design and Management International School

MS200 Learner Guide

Precious Metal Arts Diploma

*Tame precious metals &
mold them through
professional techniques
to bring your designs to life.*



Certificate in New Metal Technology 1
**Creative Silver
Modelling Techniques**

Certificate in New Metal Technology 2
**Sculptural Design
with Mixed Media**

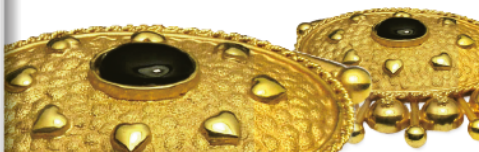
Certificate in Traditional Metalsmithing 1
**Foundation Metalwork
Skills & Experience**

Certificate in Traditional Metalsmithing 2
**Intermediate Tehniques
& Basic Stone Setting**

Certificate in Jewellery Trade Practices 1
Gem & Jewellery Trade Secrets

Certificate in Jewellery Fashion Trends 1
**Epic &
Contemporary Trends**

*Completing all 6 certifications leads to a
Diploma in Precious Metal Arts.*



Traditional Metalsmithing 2:

Intermediate Techniques

& Basic Stone Setting

Course Overview

About the training organization

The JDMIS is a unique school in Asia providing Jewellery Design and Management Programs. JDMIS offers Certificate Courses leading to Diploma and Advanced Diploma in both design and management studies. Situated in Singapore, Asia's Education Hub, JDMIS welcomes industry professionals, jewellery enthusiasts and students with a passion for jewellery to explore the world of Jewellery Design, Fabrication and Business.

About the JDMIS Traditional Metalsmithing programmes

This course is intended to provide comprehensive professional metalsmithing training to jewellery professionals and creative individuals interested in entering the jewellery trade.

It represents a synthesis of artistic, technical and workshop skills that familiarizes graduates with age-old processes in the making of jewellery in order to better inform their design sensibilities and also empower them to be independent and self-sufficient designer-artisans.

Throughout MS200, learners continue to develop basic to intermediate skills in traditional metalsmithing with more focus on more challenging techniques, including the creation of pedestal prong pendants, the value of cold connections and the discovery of the ancient techniques of Filigree and Granulation. Learners also are exposed to a wide range of technical information about the different types of metals to be used for the different projects. Safety procedures, best practices and manufacturing considerations that may impact design are always discussed. During MS200 these skills are improved and refined with further techniques and valuable practical experiences.

Beyond metalsmithing, learners develop an instinct about the feasibility of design proposals, application of practical concerns and manufacturing possibilities, and understand potential limitations and other factors of consideration from a goldsmith's point-of-view, in order to be able to better communicate design intent to craftsmen. The course was developed and is delivered by award winning jewellery artisans and business professionals with many years of experience in the jewellery industry.

Course Flow

This course is divided into multiple 3-hour practical segments that can be conducted as full day, half-day or night courses as well as multiple e-learning theoretical videos showing close-ups of the various techniques to be learned. Each physical training block consists of lecture, demonstration and interactive activities focusing on the hands-on element of training. The last segment is reserved for assessment activities geared towards ensuring every learner is competent and confident in the skills they learn throughout the course.

MS200

Traditional Metalsmithing 1

Intermediate Technique & Basic Stone Setting

1.1 – Fast review of important safety features & Introduction of MS200 Projects

- .1 On-going safety reminders and rules
- .2 Introduction to new additional tools
- .3 MS200 Projects
- .4 New Metal Types introduced
- .5 Grading procedures
- .6 Project 1, Demonstrations and guidance

1.2 – Project 1 - Pedestal Prong creation

- .1 Rolling wire to exact measurements
- .2 Creating different shapes in wires
- .3 Filing & soldering base and bail
- .4 Preparing & Soldering prongs
- .5 Professional Finishing pre-setting
- .6 Setting the Cabochon Gem

2.1 – Project 2 – Cold connection project

- .1 When to use Cold Connections
- .2 Preparation of parts
- .3 Transferring design to metal
- .4 Roll printing texture (Optional)
- .5 Adding no-fire material (Optional)
- .5 Rivet and Eyelet types

2.2 – Continuation of Project 2

- .1 Clean-up of parts
- .2 Planning location of cold connections
- .3 Demonstration on Riveting
- .4 “Invisible rivets”
- .5 Final finishing
- .6 Flush setting of Gem

3.1 – Project 3 - Filigree Technique

- .1 History and technique
- .2 Making filigree wire
- .3 Preparation of parts for pendant

3.2 - Continuation of Project 3

- .1 Soldering of wire parts
- .2 Adding other details
- .3 Attachment of bezel cup
- .4 Final finishing and polishing
- .5 Setting the gem

4.1 – Project 4 - Granulation Technique

- .1 History and technique
- .2 Demonstration of granulation
- .3 Preparation of parts for earrings
- .4 Making the granules
- .5 Cleaning metals before fusing
- .6 Preparation of granulation solution

4.2 - Continuation of Project 4

- .1 Granulation technique practiced
- .2 Heat, flow and cool sequence
- .3 Checking granules are secure
- .4 Cleanup and finishing of the pieces

5.1 – Finishing all Projects

- .1 Achieving a Professional Finish
- .2 Troubleshooting problems

5.2 – Final Review and Testing

- .1 Review of projects
- .2 Grading of work
- .3 Multiple choice test